



Modern - Gruppo doccia incasso

Codice kit: 3305 UDI-150

Gruppo doccia incasso termostatico con soffione tubolare verticale girevole con Flyfall

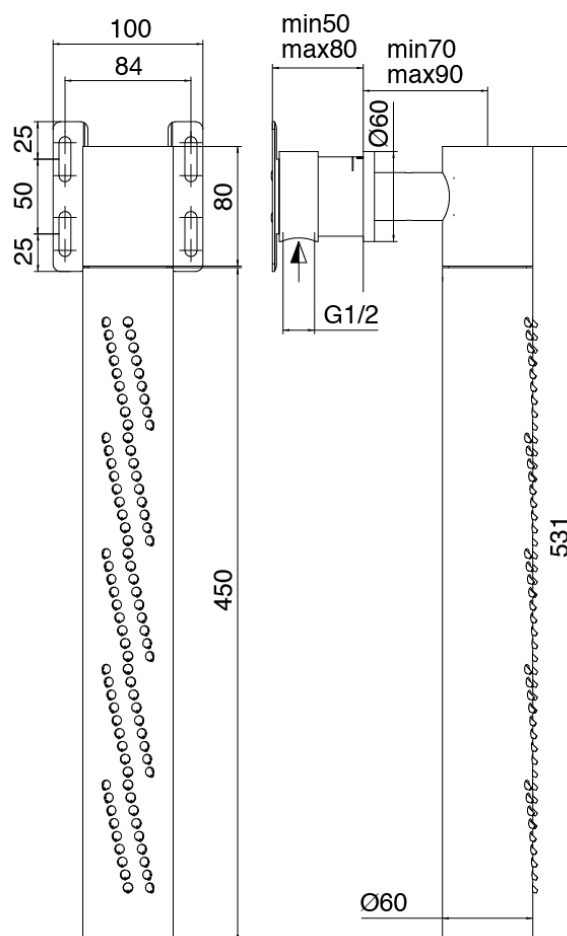
Componenti



Soffione tubolare con Flyfall

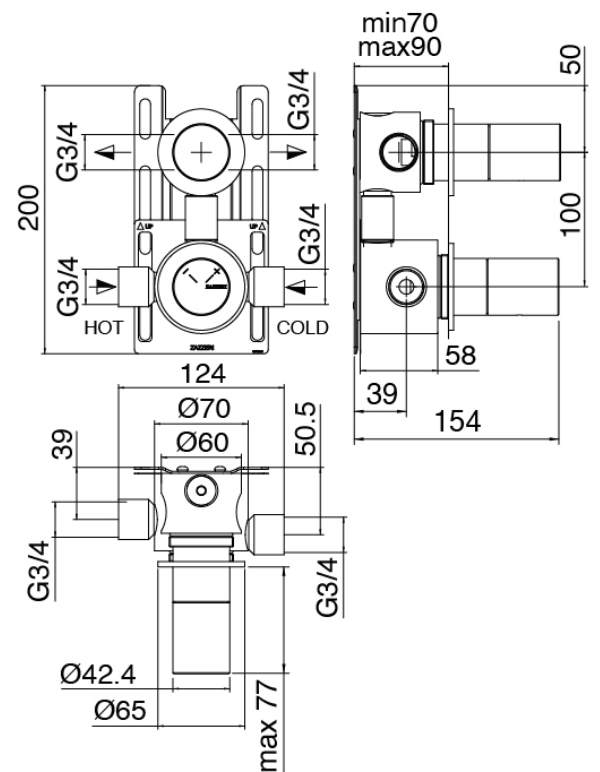
Cod: 3300SO03A00

Soffione tubolare girevole verticale a parete con Flyfall





Soffione tubolare vert/orizz a parete - Parte grezza



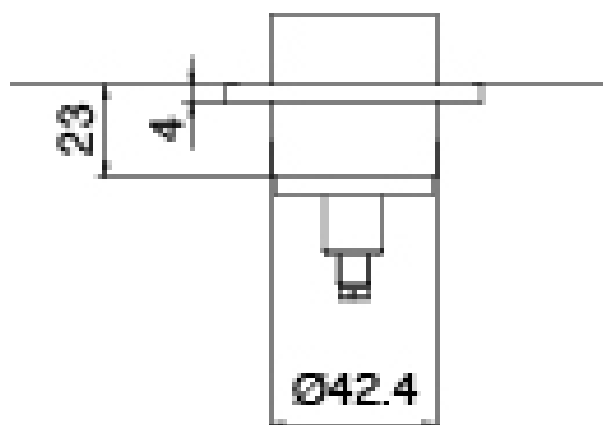
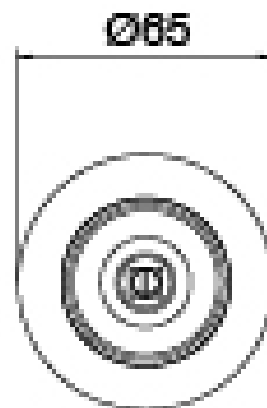
Gruppo termostatico da incasso CONFORT a 1 uscita
(1 rubinetto) - Parti grezze



Rubinetto di linea

Cod: 3305Y407AA0

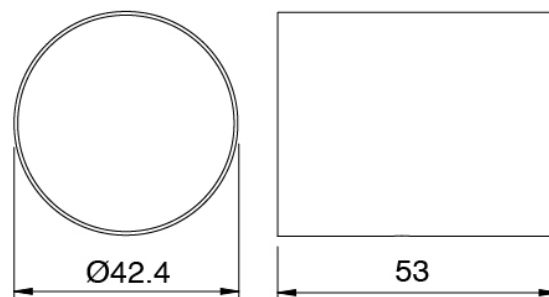
Rubinetti di linea - parti esterne



Manetta

Cod: 3305MA05A00

HANDLE MA05 Manetta deviatore a 2 e 3 vie con stop/3 vie senza stop/rubinetto di linea

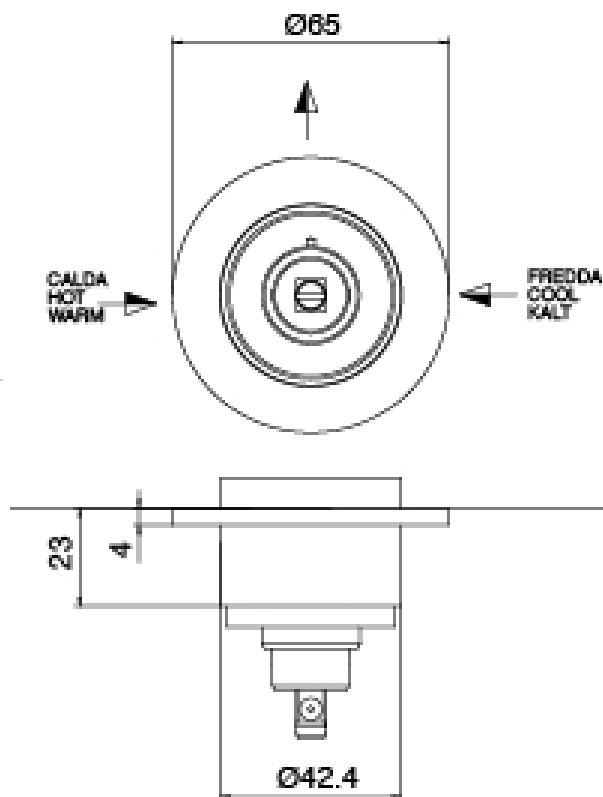




Comando termostatico

Cod: 3305T550AA0

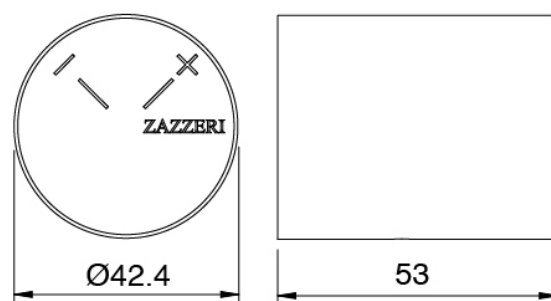
Comando termostatico da incasso - parti esterne



Manetta

Cod: 3305MA06A00

HANDLE MA06 Manetta comando termostatico



Finiture disponibili:

finiture speciali su richiesta salvo quantitativi minimi di ordine garantiti



acciaio spazzolato

ASAS



antracite

APAP



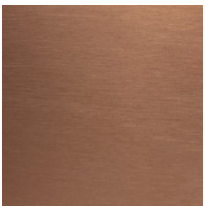
bronzorame

BPBP



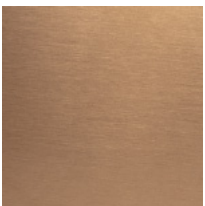
carbon

KPKP



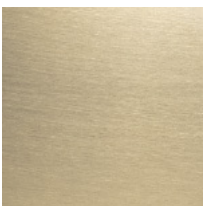
rame

RPRP



cognac

CPCP



orobianco

GPGP