

Q316 - Soffione doccia SPOT e doccetta

Codice kit: 3400 DDI-090

Soffione doccia SPOT (Q.tà 2) con doccetta e miscelatore a incasso – 2 uscite



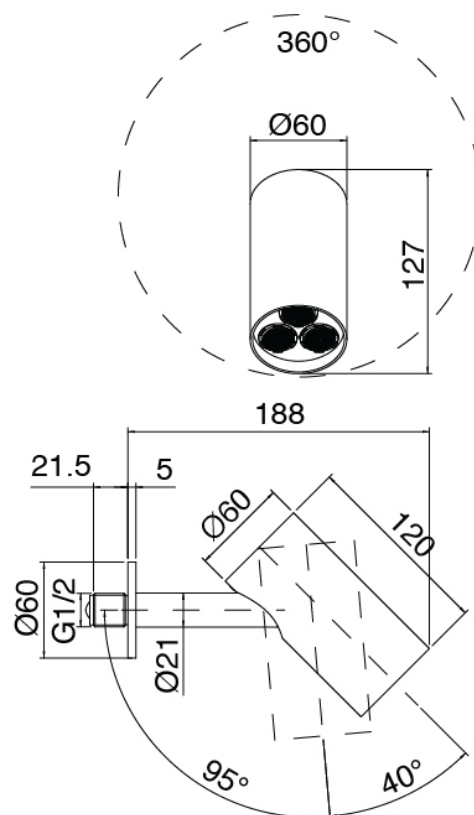
Componenti



Soffione doccia SPOT

Cod: 3400SO01A00

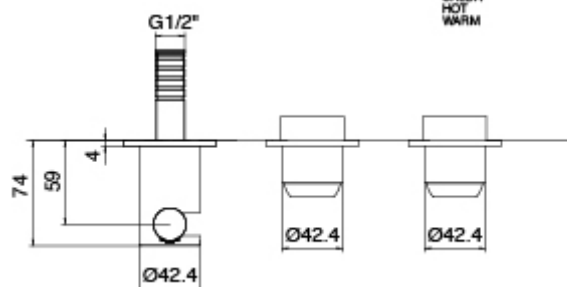
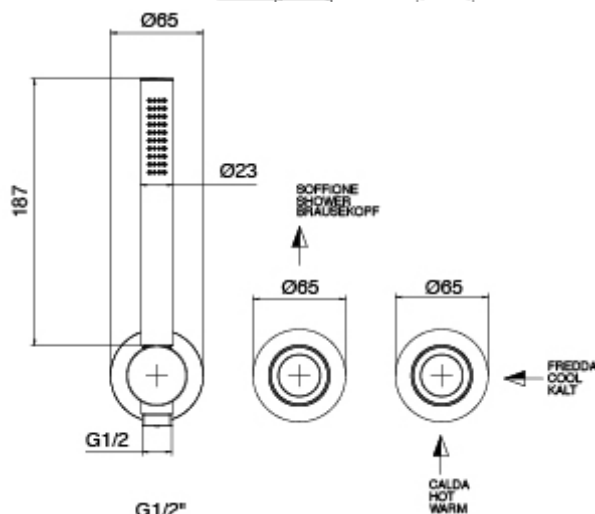
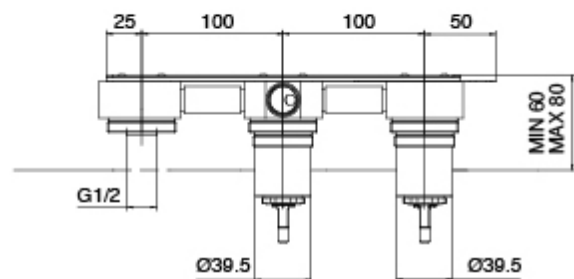
Soffione doccia SPOT a parete orientabile





Miscelatore doccia ad incasso con deviatore e

Technical drawing of the shower head assembly. The drawing shows a side view of the shower head with dimensions and labels. The overall width is 275 mm. The distance between the centers of the three main nozzles is 25 mm, 50 mm, 50 mm, 50 mm, and 25 mm. The overall height is 100 mm. The distance between the top and bottom rows of nozzles is 84 mm. The distance between the top and bottom rows of the side nozzles is 8 mm. The distance between the top and bottom rows of the central nozzle is 8 mm. The labels include "SOFFIONE SHOWER BRAUSEKOPF" pointing to the central nozzle, "FREDDA COOL KALT" pointing to the left side nozzle, and "CALDA HOT WARM" pointing to the right side nozzle.



Miscelatore doccia ad incasso con deviatore e

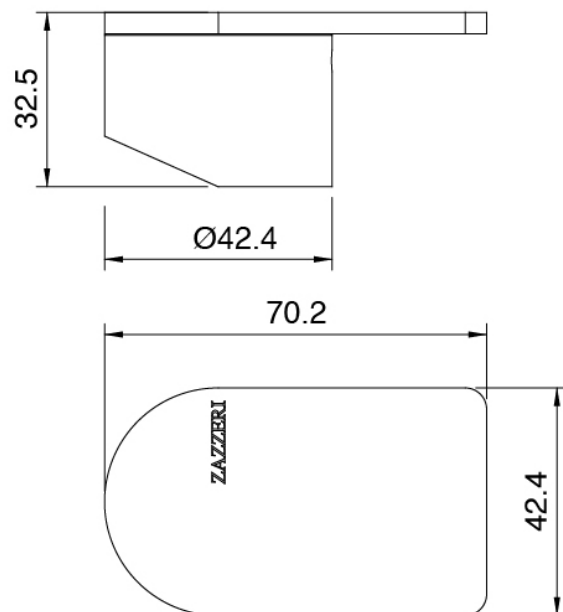
Doccetta - senza borchia e flessibile - parti esterne



Manetta

Cod: 3400MA02A00

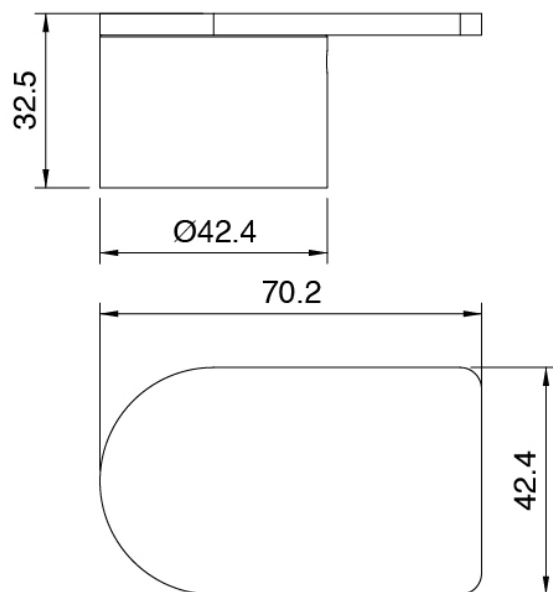
HANDLE MA02 Manetta mix incassi/lavabo e vasca da terra



Manetta

Cod: 3400MA04A00

HANDLE MA04 Manetta deviatore a 2 vie senza stop



Flessibile L=150mm

Cod: 3300N504A00

Flessibile per doccia in PVC Nero - L=150mm

Finiture disponibili:

finiture speciali su richiesta salvo quantitativi minimi di ordine garantiti



acciaio spazzolato

ASAS



antracite

APAP



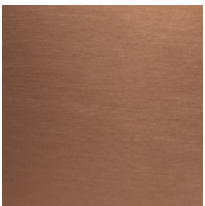
bronzorame

BPBP



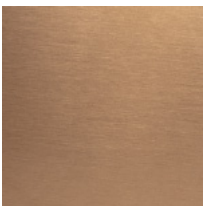
carbon

KPKP



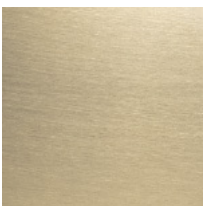
rame

RPRP



cognac

CPCP



orobianco

GPGP