

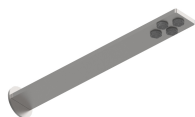
Q316 - Douche encastré

Codice kit: 3400 UDI-140

Pomme de douche STECCA (Q.tà 2) et mitigeur thermostatique encastré avec douchette



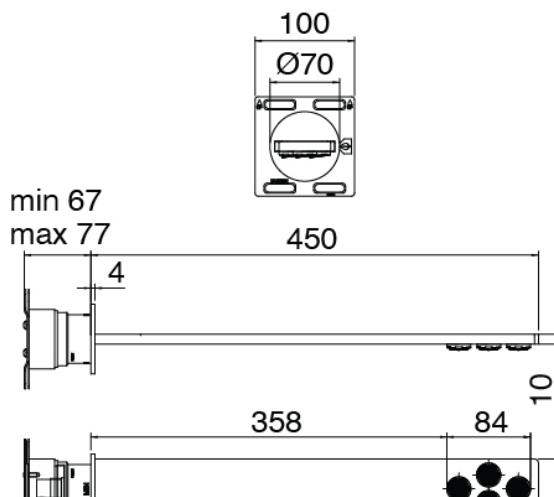
Componenti



Pomme de douche

Cod: 3400SO02A00

Pomme de douche mural STECCA



Cod: 3300B121A00

Pomme de douche mural - partie brute

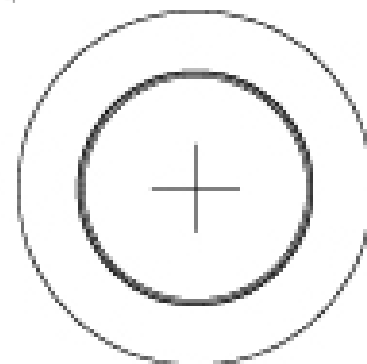
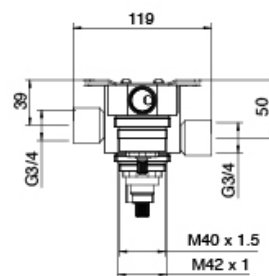
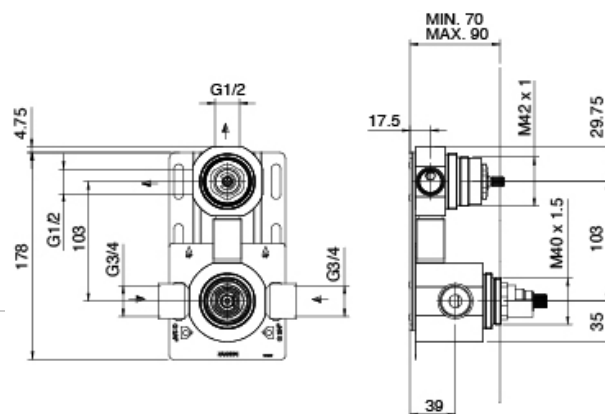




Partie brute

Cod: 3300D802A00

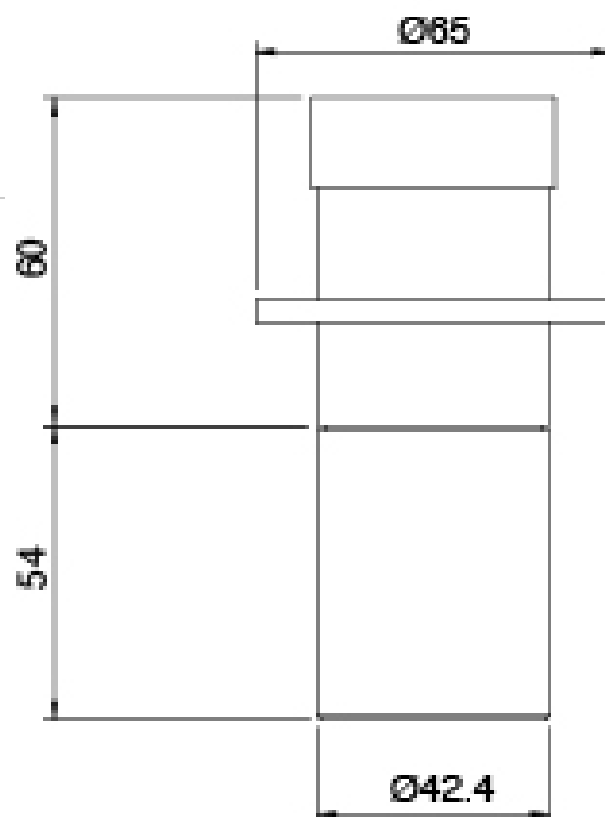
Mitigeur thermostatique encastre Smart a 2 voies - (1 inverseur avec stop) - partie brute



Inverseur

Cod: 3305Y408AA0

Inverseur - parties externes

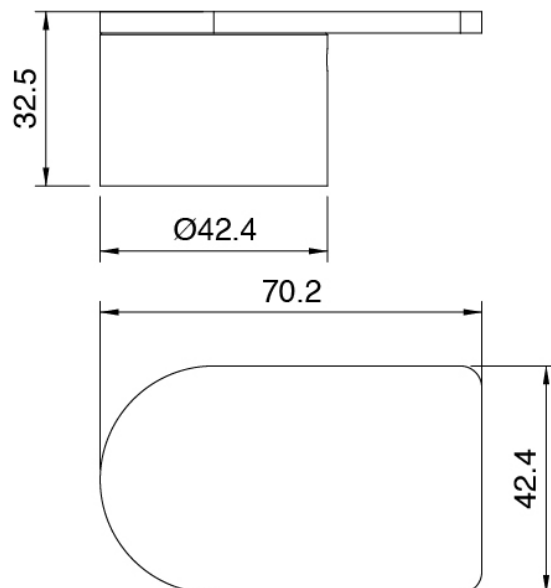




Manette

Cod: 3400MA05A00

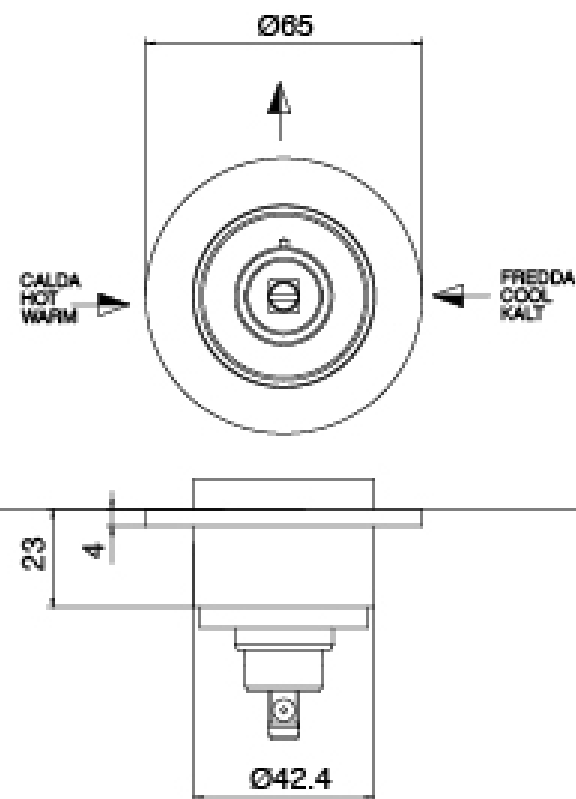
HANDLE MA05 Manette pour inverseur à 2/3
voies/robinet d'arrêt



Commande thermostatique

Cod: 3305T550AA0

Mitigeur thermostatique encastré - parties externes

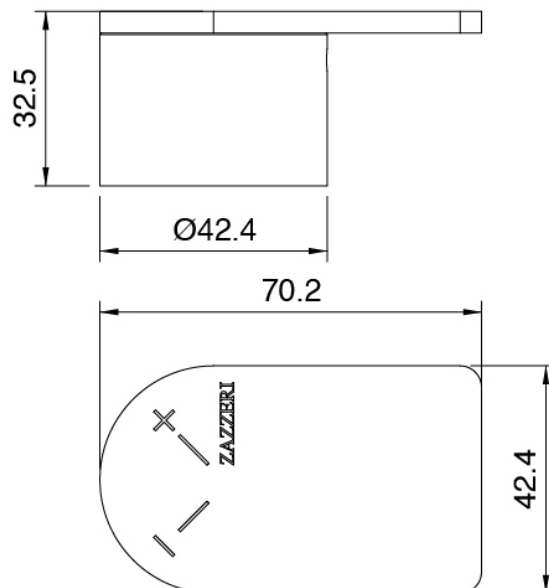




Manette

Cod: 3400MA06A00

HANDLE MA06 Manette pour thermo



Flexible L=150mm

Cod: 3300N504A00

Flexible en PVC pour douchette - Noir - L 1,2m

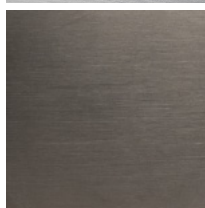
Finiture disponibili:

finiture speciali su richiesta salvo quantitativi minimi di ordine garantiti



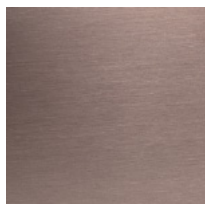
acier brossé

ASAS



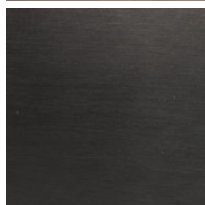
antracite

APAP



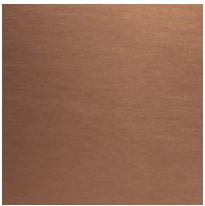
bronzorame

BPBP



carbon

KPKP



rame

RPRP



cognac

CPCP



orobianco

GPGP