

Modern - Built-in shower set

Codice kit: 5700 UDI-120

Built-in thermostatic shower with flat shower head (Flyfall ®), tubular waterfall and led, hand shower – 4 exits

Componenti



Thermostatic control (6700)

Cod: 6700T550A00

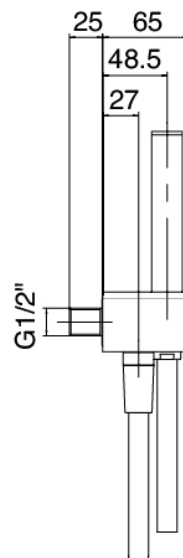
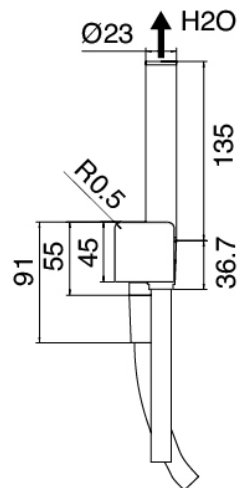
Concealed thermostatic mixer - external parts



Stand alone hand shower

Cod: 5700Q419A00

Handshower set, with POP handshower with water outlet and support



Untreated finish part

Cod: 2900D802A00

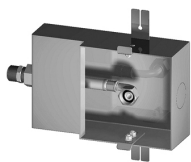
4- ways built-in thermostatic (2 diverters)- rough parts



Diverter tap (6700)

Cod: 6700Y407AA0

In-line concealed valves - external parts



Square box

Cod: 5700SO03AB0

Built -in box squared showerhead



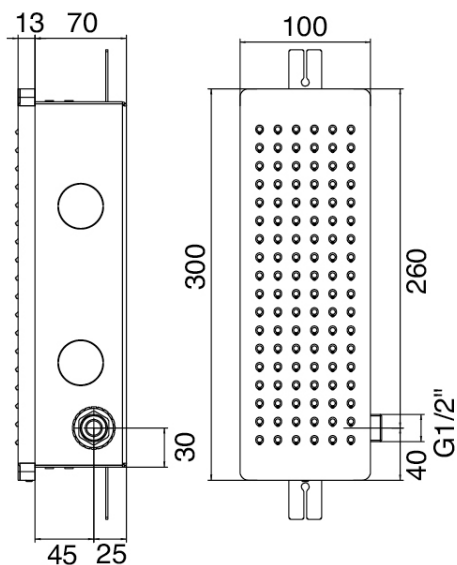
Rectangular box

Cod: 5700SO01AB0

Built -in box vertical showerhead



Squared wall-mounted showerhead 150x150mm
con Flyfall



Vertical wall-mounted showerhead 100X300mm
with Flyfall

Finiture disponibili:

finiture speciali su richiesta salvo quantitativi minimi di ordine garantiti

cromo

CRCR

brushed steel

NFNF